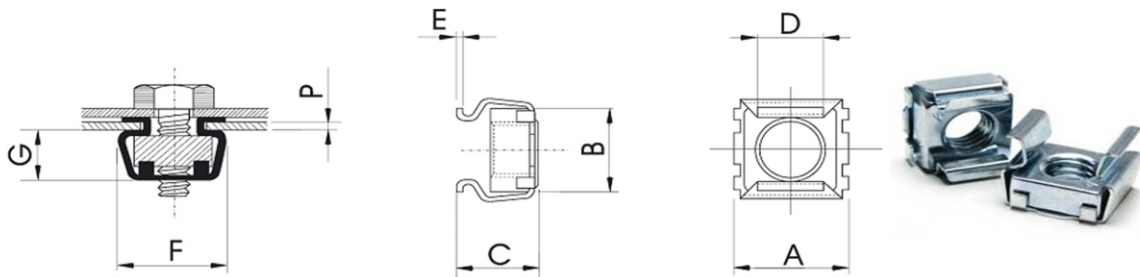


## CAGE NUT



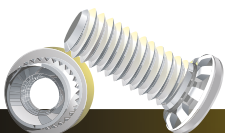
Material: steel 18/8

Dia.	P=sheet thickness	Ref.	Dimensions							Hole
			A	B	C	D	E	F	G	
M6	1,2-1,6	5116 - A	12	11,4	8	7,2	0,45	12,2	6	8,3 x 8,3 (±0,1)
	1,7-2,5	5116 - B			9					
	2,6-3,5	5116 - C			10					
M8	1,0-1,7	5128 - A	16,4	15,5	10,4	10,6	0,5	16,6	7,8	12x12 (±0,1)
	1,8-3,2	5128 - B			12					
	3,3-4,7	5128 - C			13,5					
M10	1,0-1,7	5120 - A	16,4	15,5	10,4	10,6	0,5	16,6	7,8	12x12 (±0,1)
	1,8-3,2	5120 - B			12					
	3,3-4,7	5120 - C			13,5					

### SPECIFICATIONS & DETAILS

MVD PART CODE	MVCNMXXX	MVD DESCRIPTION	CAGE NUT MXX
DRAWN BY	ABHISHEK	APPROVED BY	MAGESH
DRAWING REV. NO	00	MATERIAL	SPRING STEEL
DATE		FINISH	TRIVALENT ZINC

ALL DIMENSIONS ARE IN MM, UNLESS SPECIFIED



#308, Jigani-Bommasandra Link Road, Jigani, Anekal Taluk, Bengaluru - 560 105, INDIA.