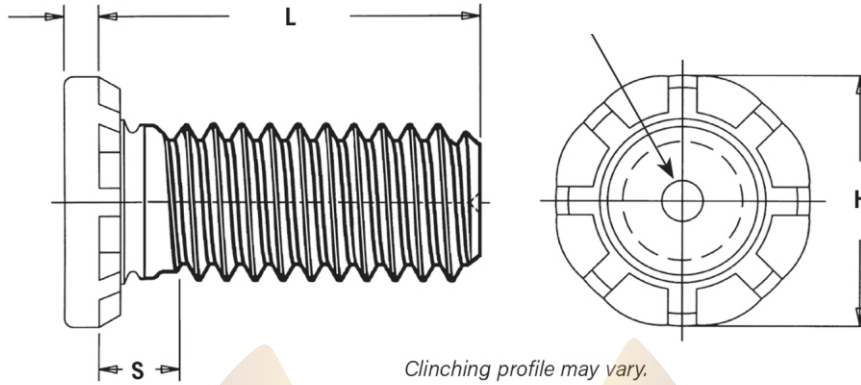


## HIGH STRENGTH CLINCH STUD

### STAINLESS STEEL : HFHS



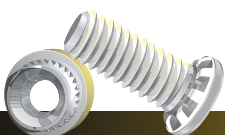
UNIFIED	Thread Size	Type	Thread Code	Length Code "L" ±.015 (Length Code in 16ths of an inch)						Min. Sheet Thickness (2)	Hole Size in Sheet +.005 -.000	H ±.01	S Max. (3)	T Max.	Max. Hole in Attached Parts	Min. Dist. Hole $\varnothing$ to Edge
		Fastener Material														
	STAINLESS STEEL															
.190-32 (#10-32)	HFHS	032	8	12	16	20	24	28	32	.050	.190	.300	.105	.040	.252	.415
.250-20 (1/4-20)	HFHS	0420	8	12	16	20	24	28	32	.060	.250	.380	.125	.050	.312	.460
.313-18 (5/16-18)	HFHS	0518	8	12	16	20	24	28	32	.075	.312	.480	.140	.070	.374	.500
.375-16 (3/8-16)	HFHS	0616	—	12	16	20	24	28	32	.090	.375	.580	.155	.085	.437	.530

METRIC	Thread Size x Pitch	Type	Thread Code	Length code "L" ±0.4 (Length Code in millimeters)						Min. Sheet Thickness (2)	Hole Size in Sheet +0.13	H ±0.25	S Max. (3)	T Max.	Max. Hole in Attached Parts	Min. Dist. Hole $\varnothing$ to Edge
		Fastener Material														
	STAINLESS STEEL															
M5 x 0.8	HFHS	M5	15	20	25	30	35	40	50	1.3	5	7.8	2.7	1.14	6.4	10.7
M6 x 1	HFHS	M6	15	20	25	30	35	40	50	1.5	6	9.4	2.8	1.27	7.5	11.5
M8 x 1.25	HFHS	M8	15	20	25	30	35	40	50	2	8	12.5	3.5	1.78	9.5	12.7
M10 x 1.5	HFHS	M10	15	20	25	30	35	40	50	2.3	10	15.7	4.1	2.29	11.5	13.7

#### SPECIFICATIONS & DETAILS

MVD PART CODE	MVHFHSMXX	MVD DESCRIPTION	HIGH TORQUE CLINCH STUD HFHS-MXX
DRAWN BY	ABHISHEK	APPROVED BY	MAGESH
DRAWING REV. NO	00	MATERIAL	STAINLESS STEEL 304
DATE		FINISH	SELF

ALL DIMENSIONS ARE IN MM, UNLESS SPECIFIED



#308, Jigani-Bommasandra Link Road, Jigani, Anekal Taluk, Bengaluru - 560 105, INDIA.