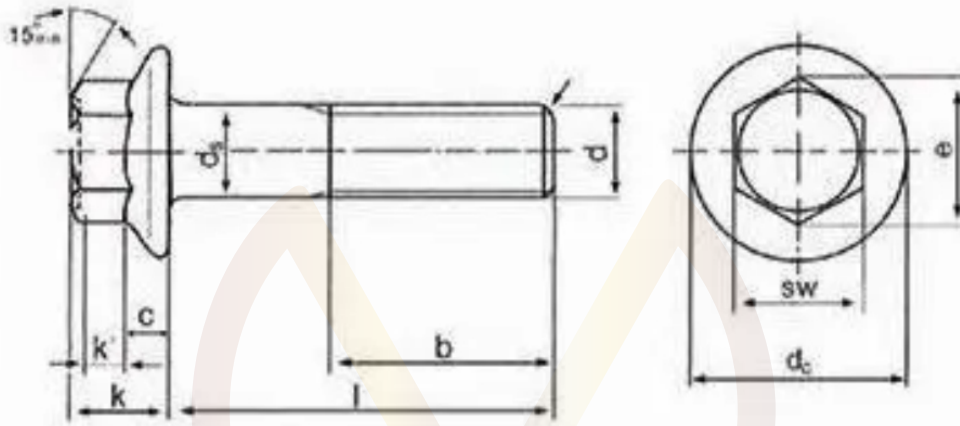


## FLANGE BOLT DRAWING AS PER DIN 6921 WITH SERRATED



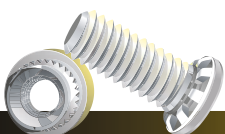
Thread size		M5	M6	M8	M10	M12	M14	M16
Pitch	P	0.80	1.00	1.25	1.50	1.75	2.00	2.00
Flange dia	d <sub>c</sub>	11.80	14.20	18.00	22.30	26.60	30.50	35.00
Flange height	c	1.0	1.1	1.2	1.5	1.8	2.1	2.4
Wire dia	min	4.82	5.82	7.78	9.78	11.73	13.73	15.73
Head height	k	5.4	6.6	8.1	9.2	11.5	12.8	14.4
	k'	2.0	2.5	3.2	3.6	4.6	5.1	5.8
Head width	sw	8	10	13	15	16	18	21
Diagonal	e	8.71	10.95	14.26	16.50	17.62	19.86	23.15
Thread length	b <sup>1</sup>	16	18	22	36	30	34	38
	b <sup>2</sup>	-	-	28	32	36	40	44

b<sup>1</sup> : Thread length for bolts up to 125mm.  
b<sup>2</sup> : Thread length for bolts between 125mm. & 200mm.

NOTE :- LENGTH IS AS PER THE CUSTOMER REQUIREMENT

SPECIFICATIONS & DETAILS			
MVD PART CODE	MV6921KMXXXX	MVD DESCRIPTION	HEX FLANGE BOLT WITH SERR STL 8.8G MXXX
DRAWN BY	ABHISHEK	APPROVED BY	MAGESH
DRAWING REV. NO	00	MATERIAL	STEEL 8.8 GRADE
DATE		FINISH	AS PER CUSTOMER REQUIREMENT

ALL DIMENSIONS ARE IN MM, UNLESS SPECIFIED



#308, Jigani-Bommasandra Link Road, Jigani, Anekal Taluk, Bengaluru - 560 105, INDIA.