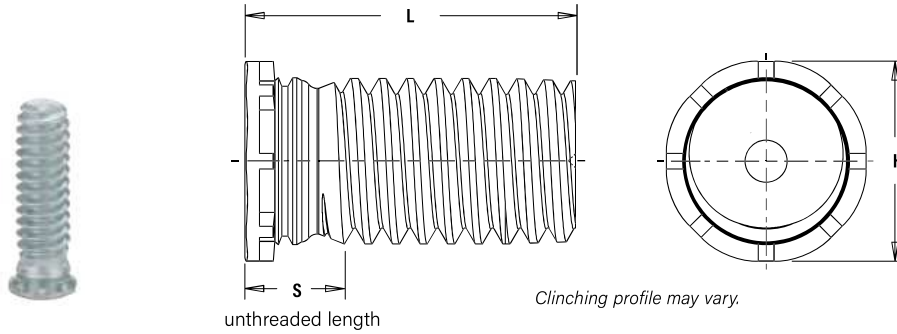


LOW-DISPLACEMENT HEAD STUDS (FHLS)



All dimensions are in inches.

STAINLESS STEEL (FHLS)

UNIFIED	Thread Size	Type	Thread Code	Length Code "L" ± .015 (Length Code in 16ths of an inch)									Min. Sheet Thickness (1)	Hole Size in Sheet +.003 -.000	H ±.015	S Max. (2)	Max. Hole in Attached Parts	Min. Dist. Hole ϕ to Edge	
		Fastener Material		.250	.312	.375	.500	.625	.750	.875	1.00	1.25							1.50
		STAINLESS STEEL																	
	.086-56 (#2-56)	FHLS	256	4	5	6	8	10	12	—	—	—	.040	.085	.112	.080	.100	.098	
	.112-40 (#4-40)	FHLS	440	4	5	6	8	10	12	14	16	—	.040	.111	.138	.085	.126	.124	
	.138-32 (#6-32)	FHLS	632	4	5	6	8	10	12	14	16	20	24	.040	.137	.164	.090	.152	.150
	.164-32 (#8-32)	FHLS	832	4	5	6	8	10	12	14	16	20	24	.040	.163	.190	.090	.178	.176
	.190-32 (#10-32)	FHLS	032	—	5	6	8	10	12	14	16	20	24	.040	.189	.225	.100	.204	.210

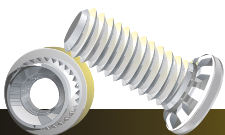
All dimensions are in millimeters.

METRIC	Thread Size x Pitch	Type	Thread Code	Length Code "L" ± 0.4 (Length Code in millimeters)									Min. Sheet Thickness (1)	Hole Size in Sheet +0.08	H ± 0.4	S Max. (2)	Max. Hole in Attached Parts	Min. Dist. Hole ϕ to Edge	
		Fastener Material		6	8	10	12	15	18	20	25	30							35
		STAINLESS STEEL																	
	M2.5 x 0.45	FHLS	M2.5	6	8	10	12	15	18	—	—	—	—	1	2.5	3.15	2.1	2.9	2.8
	M3 x 0.5	FHLS	M3	6	8	10	12	15	18	20	25	—	—	1	3	3.65	2.1	3.2	3.3
	M3.5 x 0.6	FHLS	M3.5	6	8	10	12	15	18	20	25	30	—	1	3.5	4.15	2.3	3.9	3.8
	M4 x 0.7	FHLS	M4	6	8	10	12	15	18	20	25	30	35	1	4	4.65	2.4	4.5	4.3
	M5 x 0.8	FHLS	M5	—	8	10	12	15	18	20	25	30	35	1	5	5.9	2.7	5.2	5.6

SPECIFICATIONS & DETAILS

MVD PART CODE	MVFLSMXX	MVD DESCRIPTION	SELF CLINCH LOW-DISPLACEMENT FHLS-MXX
DRAWN BY	ABHISHEK	APPROVED BY	MAGESH
DRAWING REV. NO	00	MATERIAL	STAINLESS STEEL 304
DATE		FINISH	SELF

ALL DIMENSIONS ARE IN MM, UNLESS SPECIFIED



#308, Jigani-Bommasandra Link Road, Jigani, Anekal Taluk, Bengaluru - 560 105, INDIA.