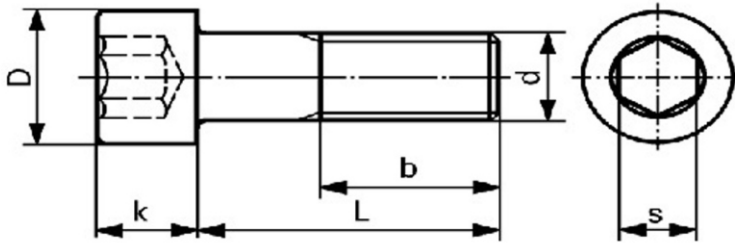


ALEN CAP SCREW (12.9 G)

DIN
912



MVD PART NO DESIGNATION

DIN 912
ALLEN CAP SCREWS FULL THREADED

MV 912 MX LX S/SS XX
DIN NO THREAD LENGTH Material Code Plating Code

NOM. THREAD DIAMETER	M 2	M 2.5	M 3	M 4	M 5	M 6	M 8	M 10	M 12	M 14
THREAD PITCH	0.4	0.5	0.5	0.7	0.8	1.0	1.25	1.5	1.8	2.0
LENGTH ls min.	16.0	17.0	18.0	20.0	22.0	24.0	28.0	32.0	36.0	40.0
D	max.	3.8	4.5	5.5	7.0	8.5	10.0	13.0	16.0	21.0
	min.	3.6	4.3	5.3	6.8	8.3	9.8	12.7	15.7	20.7
K	max.	2.0	2.5	3.0	4.0	5.0	6.0	8.0	10.0	14.0
	min.	1.9	2.4	2.9	3.8	4.8	5.7	7.6	9.6	13.6
Nominal Key Size	1.5	2.0	2.5	3.0	4.0	5.0	6.0	8.0	10.0	12.0
s	max.	1.6	2.1	2.6	3.1	4.1	5.1	6.1	8.2	10.1
	min.	1.5	2.0	2.5	3.0	4.0	5.0	6.0	8.0	12.0
SOCKET DEPTH	1.0	1.1	1.3	2.0	2.5	3.0	4.0	5.0	6.0	7.0
LENGTH	As Per Requirement									

NOM. THREAD DIAMETER	M 16	M 18	M 20	M 22	M 24	M 27	M 30	M 33	M 36	M 42
THREAD PITCH	2.0	2.5	2.5	2.5	3.0	3.0	3.5	3.5	4.0	4.5
LENGTH ls min.	44.0	48.0	52.0	56.0	60.0	66.0	72.0	78.0	84.0	96.0
D	max.	24.0	27.0	30.0	33.0	36.0	40.0	45.0	50.0	63.0
	min.	23.7	26.7	29.7	32.6	35.6	39.6	44.6	49.6	62.5
K	max.	16.0	18.0	20.0	22.0	24.0	27.0	30.0	33.0	42.0
	min.	15.6	17.6	19.5	21.5	23.5	26.5	29.5	32.4	41.4
Nominal Key Size	14.0	14.0	17.0	17.0	19.0	19.0	22.0	24.0	27.0	32.0
s	max.	14.2	14.2	17.2	17.2	19.3	19.3	22.3	24.3	32.3
	min.	14.0	14.0	17.1	17.1	19.1	19.1	22.1	24.1	32.1
LENGTH	As Per Requirement									

SPECIFICATIONS & DETAILS

MVD PART CODE	MV912MXXXS12.9	MVD DESCRIPTION	ALLEN CAP 12.9G STL MXX
DRAWN BY	ABHISHEK	APPROVED BY	MAGESH
DRAWING REV. NO	00	MATERIAL	STEEL 12.9G
DATE		FINISH	ZINC BLUE

ALL DIMENSIONS ARE IN MM, UNLESS SPECIFIED

