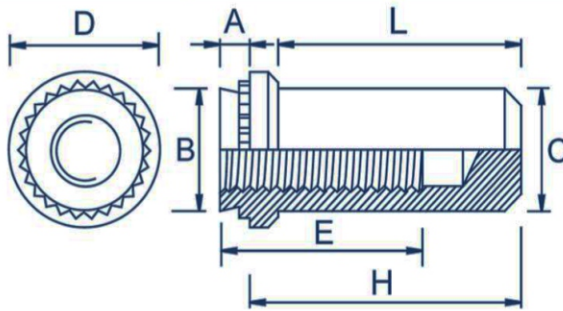


Blind Nuts

Stainless Steel: MV-BS



Metric Dimensions

Thread	M3		M4		M5		M6	
Shank code	1	2	1	2	1	2	1	2
A max	0.97	1.38	0.97	1.38	0.97	1.38	1.38	2.21
Min sheet thickness	1	1.4	1	1.4	1	1.4	1.4	2.29
Hole size +0.08 -0.00	4.22		5.41		6.35		8.75	
B max	4.20		5.38		6.33		8.73	
C max	3.84		5.2		6.02		7.8	
D ±0.25	6.35		7.95		8.75		11.1	
E min	5.3		7.1		7.1		7.8	
H ±0.25	9.6		11.2		11.2		14.3	
L max	8.5		9.8		9.8		12.7	
Min distance to hole c/ to edge	4.8		6.9		7.1		8.6	

Metric Performance Data: MV-BS

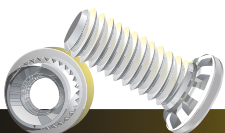
Thread	M3		M4		M5		M6	
Code	1	2	1	2	1	2	1	2
Sheet thickness	1	1.4	1	1.4	1	1.4	1.4	2.3
Installation (kN)	11.5	14	16	21	18	25	26	26
Pushout (N)	572	1021	604	1256	631	1419	1782	1782
Torque out (Nm)	1.7	2.15	3.5	5.1	4.1	6.9	11.9	12

These tests have been conducted in laboratory conditions, these figures should therefore be used for guidance only.

SPECIFICATIONS & DETAILS

MVD PART CODE	MVBSXXXX	MVD DESCRIPTION	SELF CLINCH BLIND NUTS SS BS-MXXX
DRAWN BY	ABHISHEK	APPROVED BY	MAGESH
DRAWING REV. NO	00	MATERIAL	STAINLESS STEEL 304
DATE		FINISH	SELF

ALL DIMENSIONS ARE IN MM, UNLESS SPECIFIED



#308, Jigani-Bommasandra Link Road, Jigani, Anekal Taluk, Bengaluru - 560 105, INDIA.