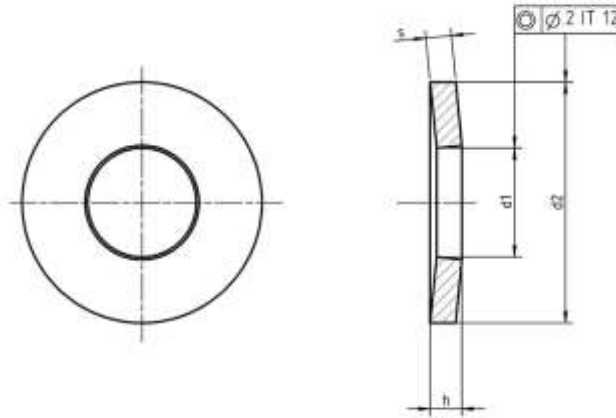


MVD PART NO DESIGNATION	MV	6796	MX	S / SS	XX
		DIN NO	THREAD SIZE	MATERIAL CODE	PLATING CODE



CONICAL SPRING WASHER



Nominal size	d1	d2	s	h		Weight kg/1000pcs	For thread size
	H14	h14		max.	min.		
2	2.2	5	0.4	0.6	0.5	0.05	M2
2.5	2.7	6	0.5	0.72	0.61	0.09	M2.5
3	3.2	7	0.6	0.85	0.72	0.14	M3
3.5	3.7	8	0.8	1.06	0.92	0.25	M3.5
4	4.3	9	1	1.3	1.12	0.38	M4
5	5.3	11	1.2	1.55	1.35	0.69	M5
6	6.4	14	1.5	2	1.7	1.43	M6
7	7.4	17	1.75	2.3	2	2.53	M7
8	8.4	18	2	2.6	2.4	3.13	M8
10	10.5	23	2.5	3.2	2.8	6.45	M10
12	13	29	3	3.95	3.43	12.4	M12
14	15	35	3.5	4.65	4.04	21.6	M14
16	17	39	4	5.25	4.58	30.4	M16
18	19	42	4.5	5.6	5.08	38.9	M18
20	21	45	5	6.4	5.6	48.8	M20
22	23	49	5.5	7.05	6.15	63.5	M22
24	25	56	6	7.75	6.77	92.9	M24
27	28	60	6.5	8.35	7.3	113	M27
30	31	70	7	9.2	8	170	M30

SPECIFICATIONS & DETAILS

MVD PART CODE	MV6796MXXXSS	MVD DESCRIPTION	DISK WASHER W/O SERR SS304 MXXXX
DRAWN BY	ABHISHEK	APPROVED BY	MAGESH
DRAWING REV. NO	00	MATERIAL	SS304
DATE		FINISH	SELF FINISH

ALL DIMENSIONS ARE IN MM, UNLESS SPECIFIED

