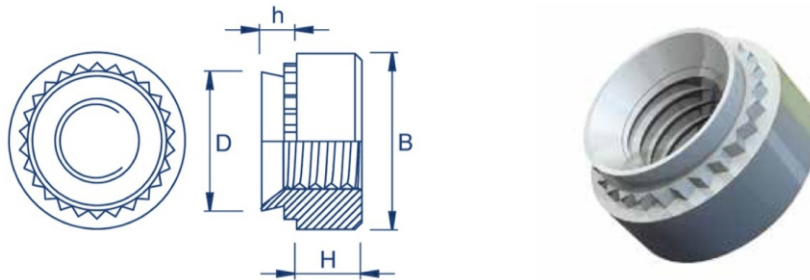


## CLINCH NUT

### 400 Series Stainless Steel : MV-SP4



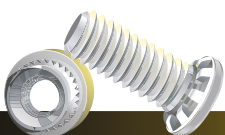
### Metric Dimensions : MV-SP4

Thread	M2, M2.5, M3				M3alt			M3.5			M4			
Code	-0	-1	-2	-3	-0	-1	-2	-0	-1	-2	-0	-1	-2	-3
D max	4.20				4.73			4.73			5.38			
B ±0.2	6.35				7.1			7.1			7.95			
H ±0.25	1.5				1.5			1.5			2.0			
h max	0.77	0.97	1.38	2.21	0.77	0.97	1.38	0.77	0.97	1.38	0.77	0.97	1.38	2.21
Min rec sheet thickness	0.8	1.0	1.4	2.3	0.8	1.0	1.4	0.8	1.0	1.4	0.8	1.0	1.4	2.3
Hole size +0.08 -0.00	4.22				4.75			4.75			5.41			
Min distance to edge of sheet	4.8				5.6			5.6			6.9			

Thread	M5				M6				M8			M10		M12
Code	-0	-1	-2	-3	0	-1	-2	-3	-1	-2	-3	-1	-2	-1
D max	6.33				8.73				10.47			13.97		16.95
B ±0.2	8.75				11.10				12.65			17.35		20.55
H ±0.25	2.0				4.08				5.47			7.48		8.5
h max	0.77	0.97	1.38	2.21	1.15	1.38	2.21	3.05	1.38	2.21	3.05	2.21	3.05	3.05
Min rec sheet thickness	0.8	1.0	1.4	2.3	1.2	1.4	2.3	3.2	1.4	2.3	3.2	2.31	3.18	3.18
Hole size +0.08 -0.00	6.35				8.75				10.5			14.0		17
Min distance to edge of sheet	7.1				8.6				9.7			13.5		16

### Metric Dimensions : MV-H Non Locking Nuts - Zinc Plated Steel

Thread	Type	h max	Min sheet thickness	Hole size in sheet +0.13	D max	B ±0.25	H ±0.13	Min dist hole to edge
	Non locking							
M10	H	1.48	1.48	12.7	12.67	16.5	7.9	12



## Metric Performance Data: MV-SP4 into 304 Stainless Steel

Thread	M2, M2.5			M3			M4			M5			M6		M8	
Code	0	-1	-2	0	-1	-2	0	-1	-2	0	-1	-2	-1	-2	-1	-2
Installation (kN)	35	40	45	35	40	45	40	44	46	42	46	51	60	66	66	72
Torsional resistance (Nm)	-	-	-	1.6	2	2.3	3.4	4.2	5.1	4	5.1	6.7	17	19	19	21.8
Pushout (N)	580	720	1290	580	720	1290	650	800	1590	805	1030	1780	2005	2300	2100	2415

S - Recommended for use in sheet hardness: HRB 80 Maximum  
 CLS - Recommended for use in sheet hardness: HRB 70 Maximum  
 SP - Recommended for use in sheet hardness: HRB 90 Maximum  
 CLA - Recommended for use in sheet hardness: HRB 50 Maximum  
 H - Recommended for use in sheet hardness: HRB 60 Maximum

These tests have been conducted in laboratory conditions, these figures should therefore be used for guidance only.

*Fastening Everything*

### SPECIFICATIONS & DETAILS

MVD PART CODE	MVSPXXXXX	MVD DESCRIPTION	SELF CLINCHING NUT SP-XXX
DRAWN BY	ABHISHEK	APPROVED BY	MAGESH
DRAWING REV. NO	00	MATERIAL	STAINLESS STEEL 410
DATE		FINISH	SELF

ALL DIMENSIONS ARE IN MM, UNLESS SPECIFIED

